

Fig. 1 Effect of different incubation period on biomass and oil production

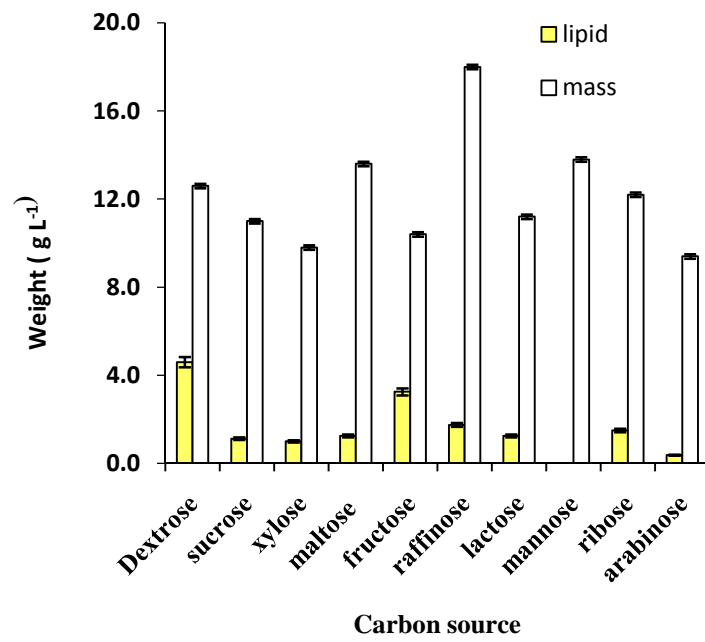


Fig. 2 Effect of carbon sources on lipid production

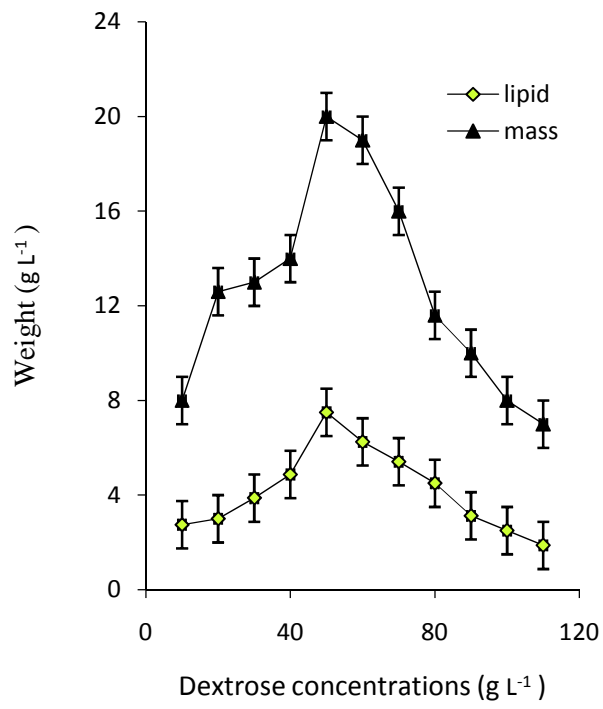


Fig. 3 Effect of dextrose concentrations on lipid production

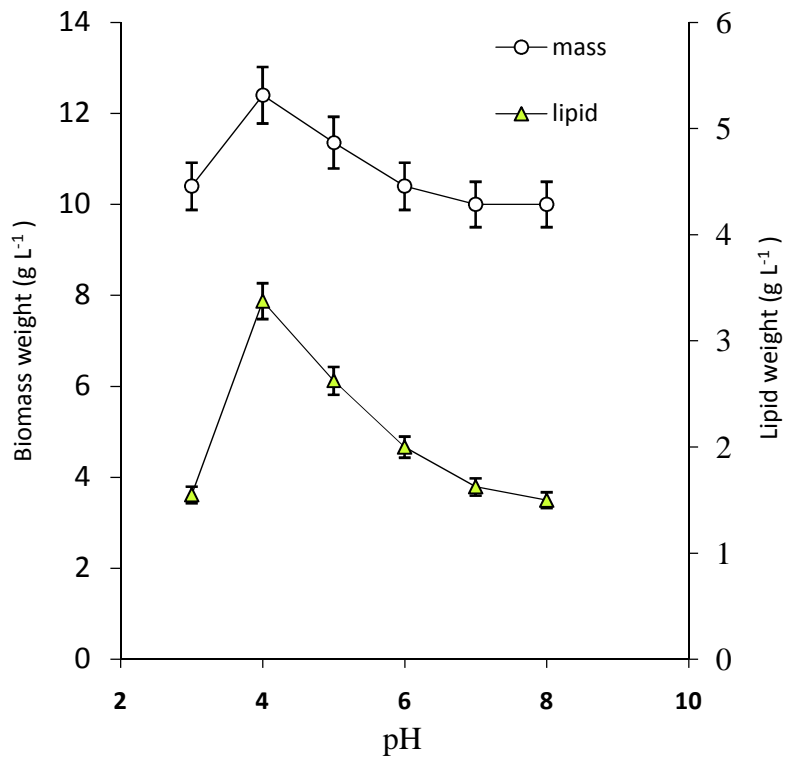


Fig. 4 Effect of initial medium pH on oil production by *Trichoderma viride* 314

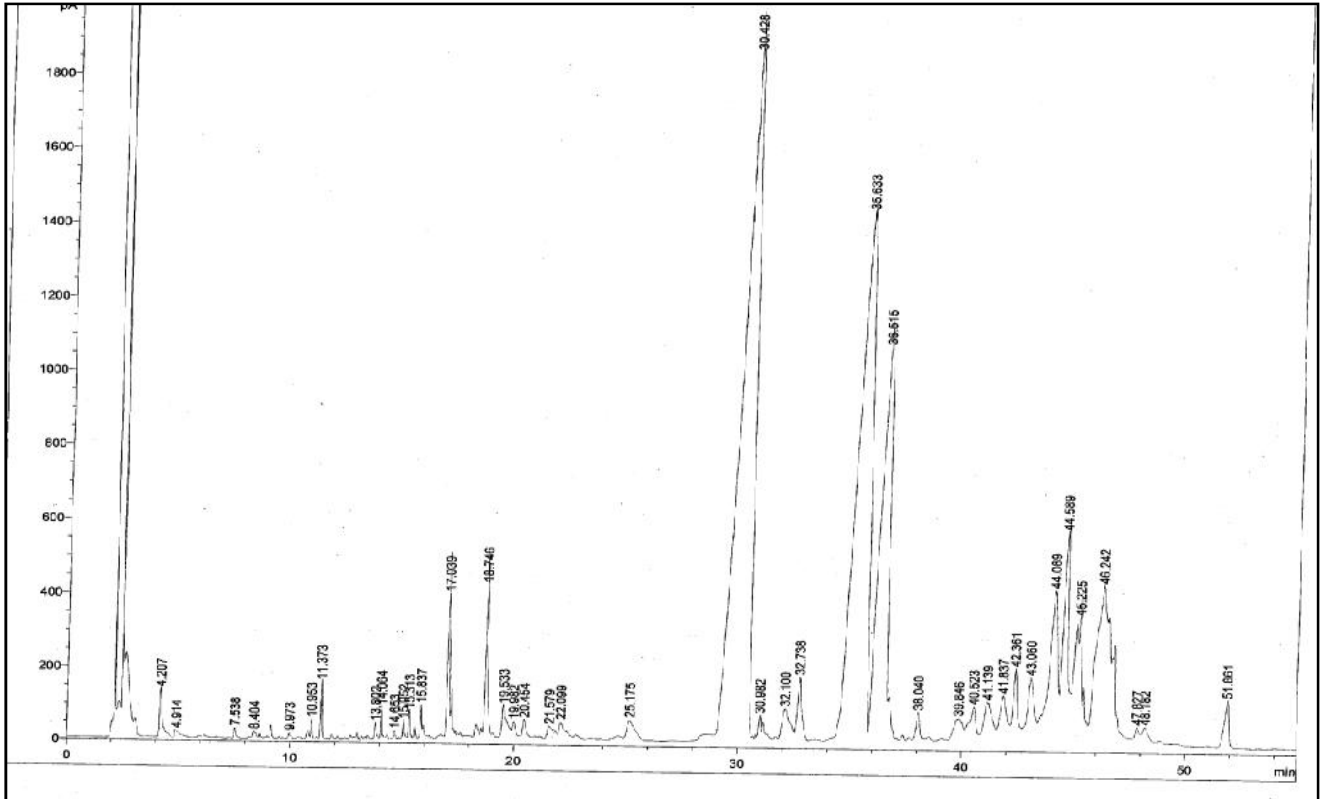


Fig.5 Fatty acids composition of *Trichoderma viride* NRC314 biomass by GC